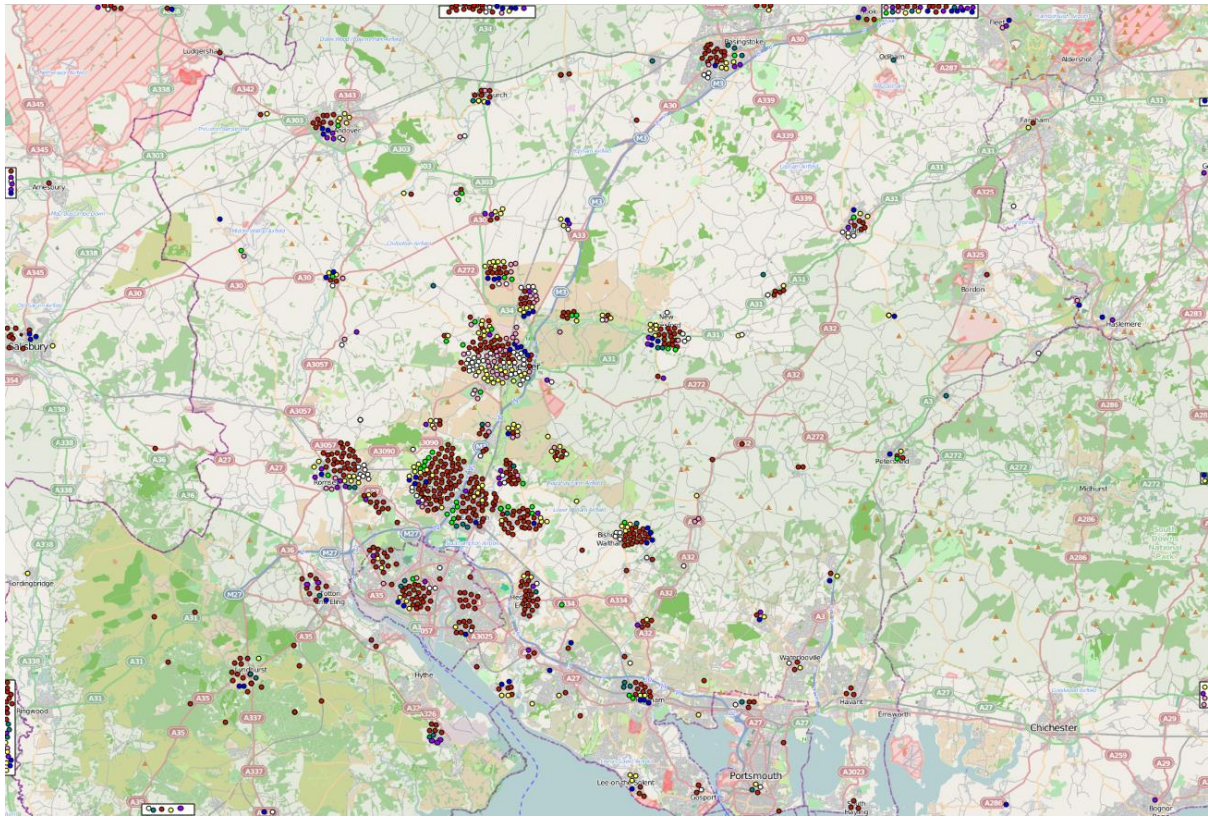


Winchester: Thinking Ahead factsheet 11

Where do people come from to visit Winchester?

Winchester City Council asked car park users where they came from in March 2013. The map below is based on their replies.



Colour	Reason for parking in Winchester
Red	Work
Yellow	Shopping
Blue	Business
Green	Education
Light Green	Health
Purple	Leisure
Pink	Social
White	Other

Each dot is on the place of origin for each reply given in the survey. Where the origin is outside the map the dot is placed on a white panel at the probable point of entry to the map.

This shows that:

- the main direction is from the south
- the largest group of people come from the Southampton/Eastleigh agglomeration
- many people who park in Winchester come from Winchester itself
- significant numbers come from Hampshire towns - Romsey, Bishop's Waltham, Alresford, Basingstoke and Andover.
- relatively few come from the villages and countryside of Hampshire, which is a common assumption that influences thinking about priorities for developing infrastructure in Winchester town.

Phil Gagg, 18 July 2016